

Camp LeMaalah

*More than just fun...
A life altering experience!*

PARENT HANDBOOK 2024



camplemaalah@gmail.com



www.camplemaalah.com



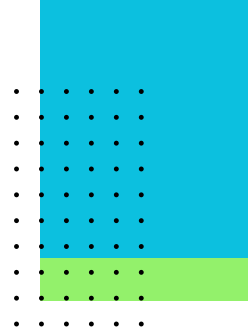
110 Sudbrook Ln.



513-702-3380
513-702-1513



TABLE OF CONTENTS



01. Overview

02. Schedule

03-4. Medications

05. Health/ Illness

06. Swimming

07. Trips

08. Keeping Shalom

09. What should I bring

10. Notifications

11. Head Staff Contact





OVERVIEW

We are thrilled to have your child/ren join us for an outstanding Camp experience!! Within our safe and positive atmosphere of Torah values and fun, a full scope of activities enables your child to grow in his social skills and individual character development.

Camp LeMaalah's mission is to provide the boys in the community entering Pre-K through 8th grade with a professional and wholesome Day Camp. The boys will enjoy learning, swimming, sports, trips, crafts, exciting activities, and much more in a Torah-true environment, supervised by counselors who are superb role models.



SCHEDULE

Camp dates are Monday, July 29th –Thursday, August 22nd. There will be no Camp on Tisha B'av, August 13th.

Monday–Thursday 9:30 am–3:30 pm

Friday 9:30 am–2:00 pm

Arrival begins at 9:20 and continues until 9:40.

If you come after that time, you will need to contact your child's Division Head to open the door. Please note swim and trip schedules so your child does not get left behind.

Dismissal: More detailed information on dismissal will be forthcoming. If you need to pick up your child early, please contact your child's Division Head with ample notice to have your child ready.



MEDICATIONS

Medical: If your child has any health conditions or social conditions; it is very important that you notify the Camp staff well before the start of Camp.

If your child has a health condition that may warrant the Camp to administer medication or supervise your child self-administering medication (other than asthma or allergy related), a **Medical Authorization Form** needs to be completed.

If your child has allergies or asthma that require medical intervention such as albuterol or an epipen; complete either the **Allergy/Anaphylaxis Action Plan** or **Asthma Action Plan**.

There will be a portion in the above forms which necessitate completion by a health practitioner.

In addition, to the above forms, if you are providing the Camp with medication, the **Medical Disposition Form** must be completed.

The above medical forms can be found at www.camplemaalah.com



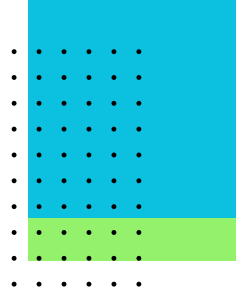
MEDICATIONS CONTINUED

All medication brought to Camp must be in the original container with the pharmacy prescription label or managers instructions attached to the container.

Please note: As of now, Camp Lemaalah is not authorized to administer routine medication such as ibuprofen or acetaminophen.

Sunscreen/Bug spray: Please put on sunscreen prior to sending your child to camp. A permission form will need to signed by a parent for Camp to administer sunscreen.

HEALTH/ ILLNESS



Camp LeMaalah is committed to creating an environment where children are safe and healthy. To prevent the spread of illness, per advice from our Medical advisors, children with conditions or symptoms seen below will be treated as indicated:

A child is considered to be sick when demonstrating any of the following symptoms:

- * Temperature of at least 101 F (100 deg F if taken axillary) when in combination with any other sign or symptom of illness.
- * Diarrhea (3 or more abnormally, unexpectedly or unexplained loose stools within a 24 hour period).
- * Severe coughing, causing the child to become red or blue in the face or to make a whooping sound
- *Difficult or rapid breathing
- *Yellowish skin or eyes
- *Redness of the eye or eyelid, thick and purulent (pus) eye discharge, matted eyelashes, burning, itching or eye pain.
- * Untreated infected skin patches, unusual spots or rashes
- * Unusually dark urine and /or gray or white stool
- * Stiff neck with elevated temperature.
- * Evidence of untreated lice/scabies or other parasitic infestations.
- * Sore throat or difficulty in swallowing
- * Vomiting more than one time or when accompanied by any other sign or symptom of illness



SWIMMING

Camp Lemaalah is outsourcing a professional school bus company to transport the boys to swim and trips off the campgrounds.

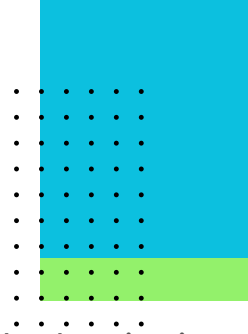
Camp Lemaalah 1st grade and older will be swimming at the beautiful olympic size swimming pool and splash pad of Coppermine Swim Facility 1220 Saffel Rd. Reisterstown, MD 21136.

The boys will be swimming every day except trip days and the nine days. On swim days, 1st & 2nd grade will depart Camp at approximately 10:45am and return around 12:45pm. The 3rd-5th graders will depart approximately 11:45am and return to Camp approximately 1:45pm. Stay tuned for TC schedule.

Deep Water Test: On the first day of swimming, all Campers will have the option of taking the deep water test. If passed, they will receive a “deep water test” bracelet and only those children will be allowed to swim in the deep water.

The Preschool Division will enjoy daily swimming in Camp Lemaalah’s very own inflatable waterpark. (They will be swimming during the 9 days).

TRIPS



Camp t-shirts will be distributed at the beginning of the Summer and must be worn on every trip.

Trips: To keep excitement mounting, we like to leave a little element of surprise in the trips. If you need to know for specific reasons, feel free to contact Rabbi Scherer.

The following dates (weather permitting) are trip days. Look out for trip information forms which will be sent home the day prior to a trip with more detailed information. Aug. 1, Aug. 7/8, Aug. 12, Aug. 14, Aug. 20.

The Preschool will be leaving Campus on the following dates. Please refer to the Preschool calendar for the exact trip.

Thursday July 11, Monday July 22, and Wednesday Aug 21. There will also be weekly “trips” coming to Camp.



KEEPING SHALOM

Keeping Shalom!!

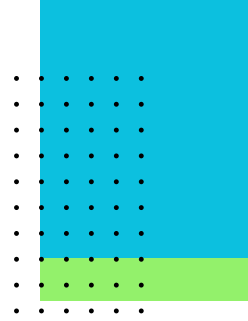
Our goal at Camp Lemaalah is to keep a very positive and respectful environment.

Our staff are trained to use positive reinforcement, prevention, supervision, and clear guidelines as much as possible.

However, if a behavior gets out of hand (ie. kicking, hitting, name-calling, etc.) Camp staff will confer with Head Staff on how to deal appropriately; understanding that each situation is case-specific. Campers may need a brief time out, a restriction from an activity, and conference with head staff and parents.

If a behavior persists that is harmful to the general Camp experience, the child may need to be temporarily or permanently suspended from Camp.

WHAT SHOULD I BRING



The following items brought to Camp; must be **clearly labeled**.

Swim-Gear: Every camper should bring a bathing suit, towel, sunscreen, pool shoes, and a plastic bag for wet items each day.

Water bottle: for safety, no glass water bottles are allowed in Camp.

Lunch: Hot lunch will be provided daily. If your child is particular with food; please make sure to bring a dairy or parve lunch.

Snacks: Due to the swimming schedule, the lunch time will be a little late in the day. Therefore, it is very important to provide your child with enough healthy snacks to keep nourished throughout the busy active day.

Due to numerous allergies, Camp Lemaalah will be **peanut free**. Please do not send in any food with traces of peanuts.

Siddur: To be brought the first day of Camp and left in Camp for the summer.

What not to Bring to Camp:

Please do not bring any personal items to camp. This includes trading cards, toys, and electronics.

Dress Code:

Boys may wear shorts and short-sleeved T-shirts. No tank tops or athletic jerseys will be allowed. Tzitzis and yarmulkes must be worn at all times. Boys should wear sneakers. (f loafers or watershoes are for the pool only)

NOTIFICATIONS



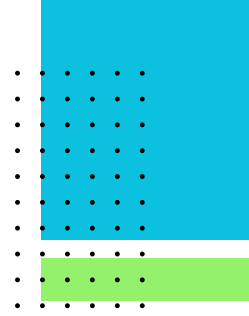
Camp Lemaalah believes strongly in good parent/staff communication. Feel free to contact your child's Division Head, Head Counselor, or Director to discuss any pertinent issue before or during the Summer. See next page for the Head Staff contact info:

A weekly newsletter will be emailed every Friday, as well as a hard copy sent home, giving you a brief review of some of the past week's highlights and informing you of important upcoming events. All Camp forms, weekly pictures, and general Camp info. will be available on the Camp's website.

Parents will be notified via email for any unexpected Trip delays, resulting in a delayed dismissal or any other important updates. Be sure to check your email daily! Please visit us at www.camplemaalah.com. We appreciate your comments and feedback - whether they are positive or constructive criticism

Looking forward to an AMAZING SUMMER!!!!!!

HEAD STAFF CONTACT



Camp Lemaalah knows the most important thing in Camp is the Staff. Camp Lemaalah prides itself on hiring stellar staff who serve as excellent role models. We maintain a very high staff: camper ratio. In addition to our incredibly talented bochorim who serve as counselors, there are responsible adult Division Heads for every grade. The following are Camp Lemaalah's Head Staff.

Rabbi Shai Scherer, Director: 513-702-1513

Mrs. Tova Scherer, Director: 513-702-3380

Mrs. Aviva Mond , Administrative Assistant	443-224-8211
Mrs. Eliana Weinreich , Preschool Head Counselor	301-928-1826
Rabbi Pinchos Weinreich , 1st-5th grade Head Counselor	516-457-5587
Rabbi Yaakov Scheiber , TC Head Counselor	718-926-9983
Rabbi Mordechai Herman , 4-5th grade Division Head	718-954-1710
Rabbi Zecharya Shear , 3rd grade Division Head	443-563-6448
Rabbi Shmuli Motzen , 2nd grade Division Head	646-510-1141
Rabbi Leib Zalesch , 1st grade Division Head	303-319-5982